

NE 1/4
SECTION 15, T.6N., R.2W., S.L.B. & M.

IN MARRIOTT-SLATERVILLE CITY

SCALE 1" = 200'

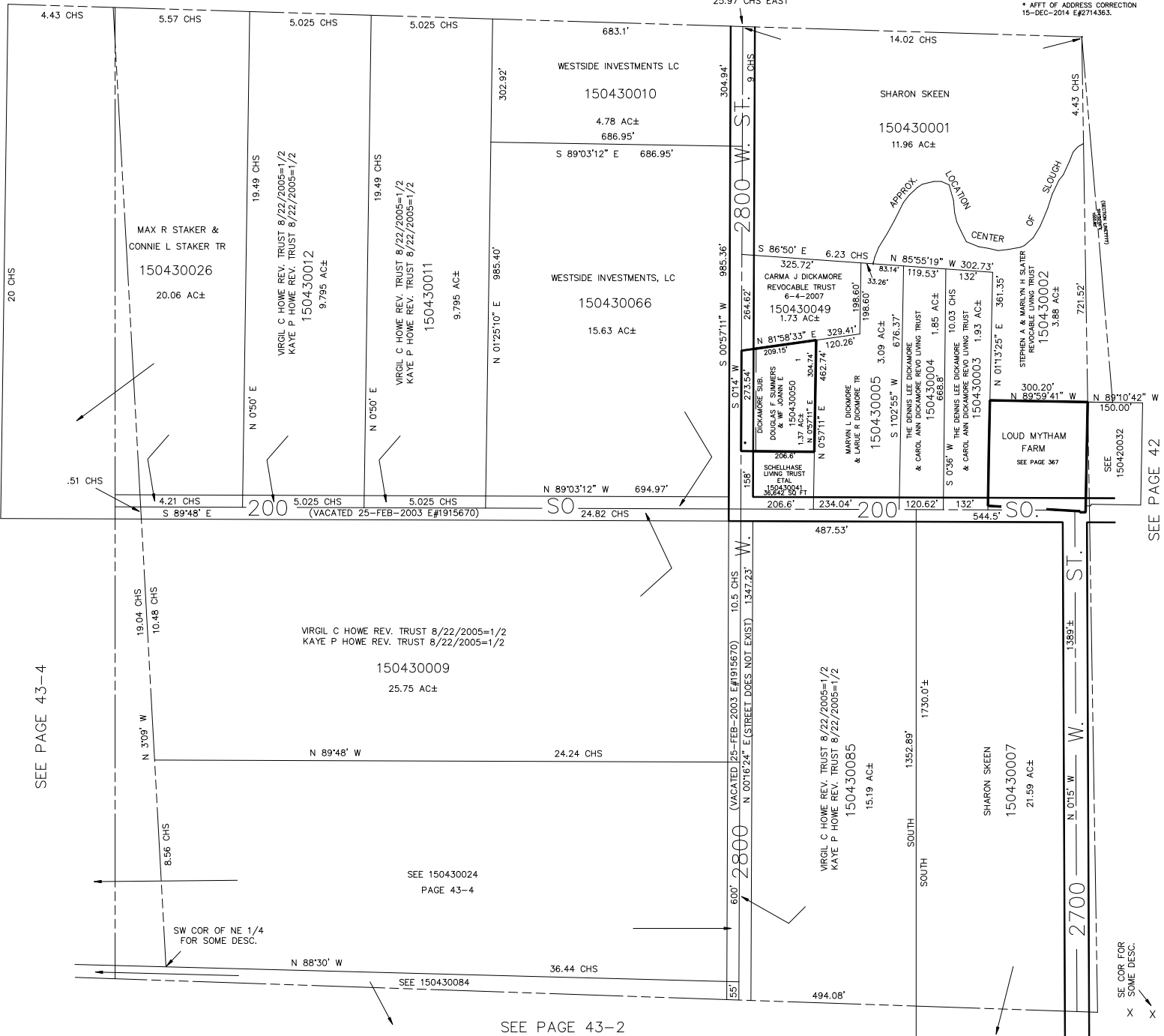
TAXING UNIT: 361

FOR SCHOOL SECTION SEE DED PLAT 6-72

SEE PAGE 29-2

25.97 CHS EAST

* AFTT OF ADDRESS CORRECTION
15-DEC-2014 E#2714363



SEE PAGE 43-4

SEE PAGE 42

SEE COR. FOR SOME DESC.

SEE PAGE 43-2